

- Legend**
- Study Area
  - Photograph Number, Location and Direction
  - Streams (NHD)
  - 100-Year Flood Zone (FEMA)
  - Sinkhole (KGS)
  - Hydric Soils (USDA)
  - Parks
  - NWI Wetland (USFWS)
  - City Boundary
  - Water Well (KDOW)**
  - Domestic Use
  - Other

0 1,000 2,000 Feet  
1:19,000 (At original document size of 11x17)

**Notes**

1. Coordinate System: NAD 1983 StatePlane Kentucky FIPS 1600 Feet
2. Base Features: see Sources and References.
3. Base Imagery: USGS-NAIP, 2014.

Project Location  
KY 90  
Barren County, Kentucky  
178554021  
Prepared by Bl on 2016-01-15

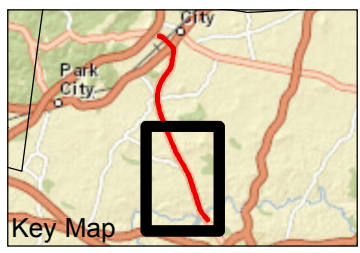
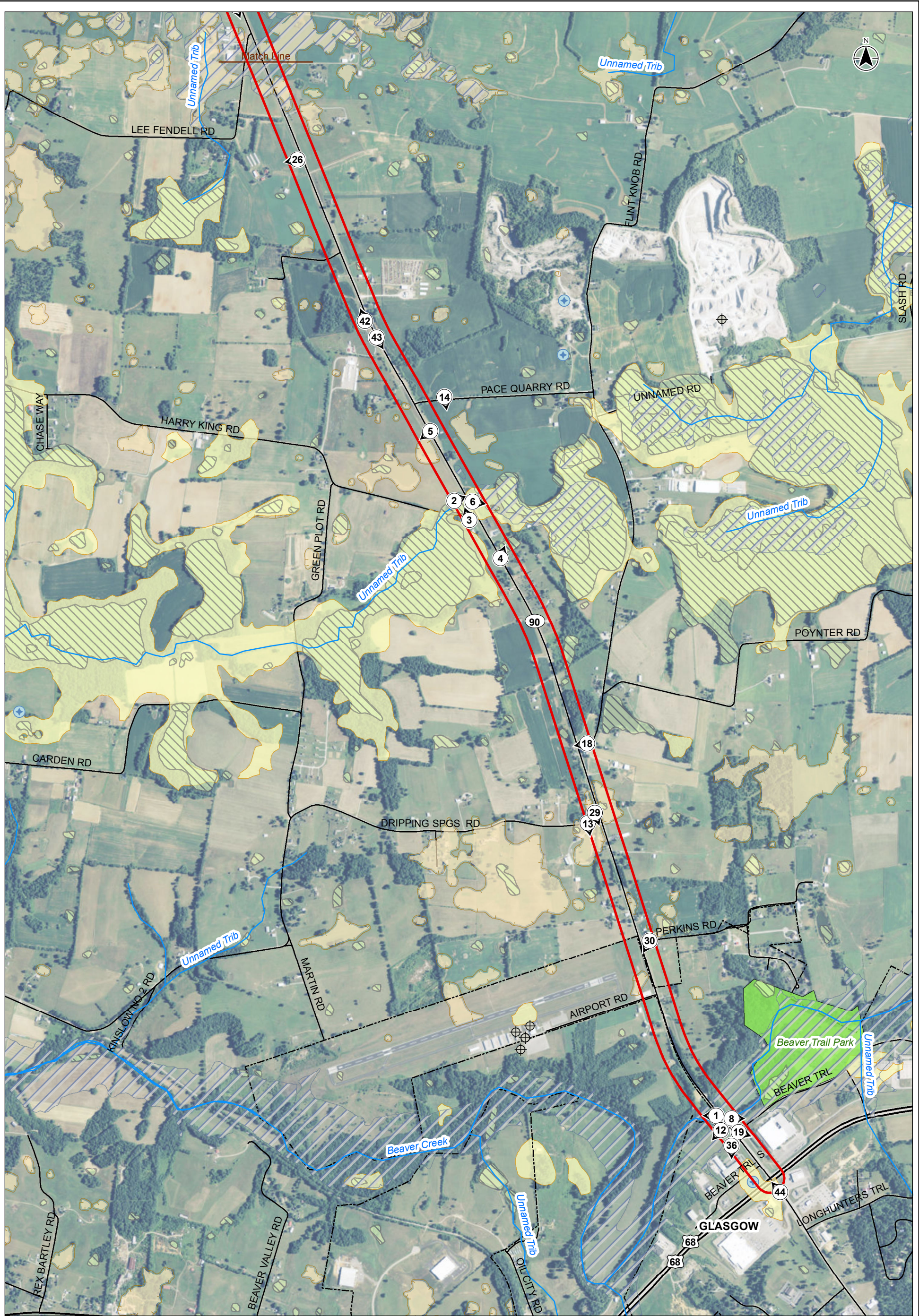
Client/Project  
KYTC District 3  
Environmental Overview  
KY 90 Scoping Study, KYTC Item # 3-8819.00

Figure No.  
**3.1**

Title  
**Environmental Footprint  
Natural Environment - North Section**

V:\1720\active\178554021\KY\_90\_scoping\_study\map\map\ky90\_63\_natural\_environment.mxd Revised: 2014-02-24 By: blesocht





- Legend**
- Study Area
  - 3 Photograph Number, Location and Direction
  - Streams (NHD)
  - 100-Year Flood Zone (FEMA)
  - Sinkhole (KGS)
  - Hydric Soils (USDA)
  - Parks
  - NWI Wetland (USFWS)
  - City Boundary
  - Water Well (KDOW)**
  - + Domestic Use
  - ⊕ Other

0 1,000 2,000 Feet  
1:19,000 (At original document size of 11x17)

**Notes**

1. Coordinate System: NAD 1983 StatePlane Kentucky FIPS 1600 Feet
2. Base Features: see Sources and References.
3. Base Imagery: USGS-NAIP, 2014.



Project Location  
KY 90  
Barren County, Kentucky  
178554021  
Prepared by Bl on 2016-01-15

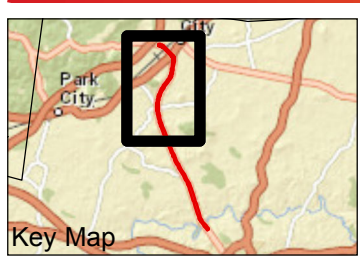
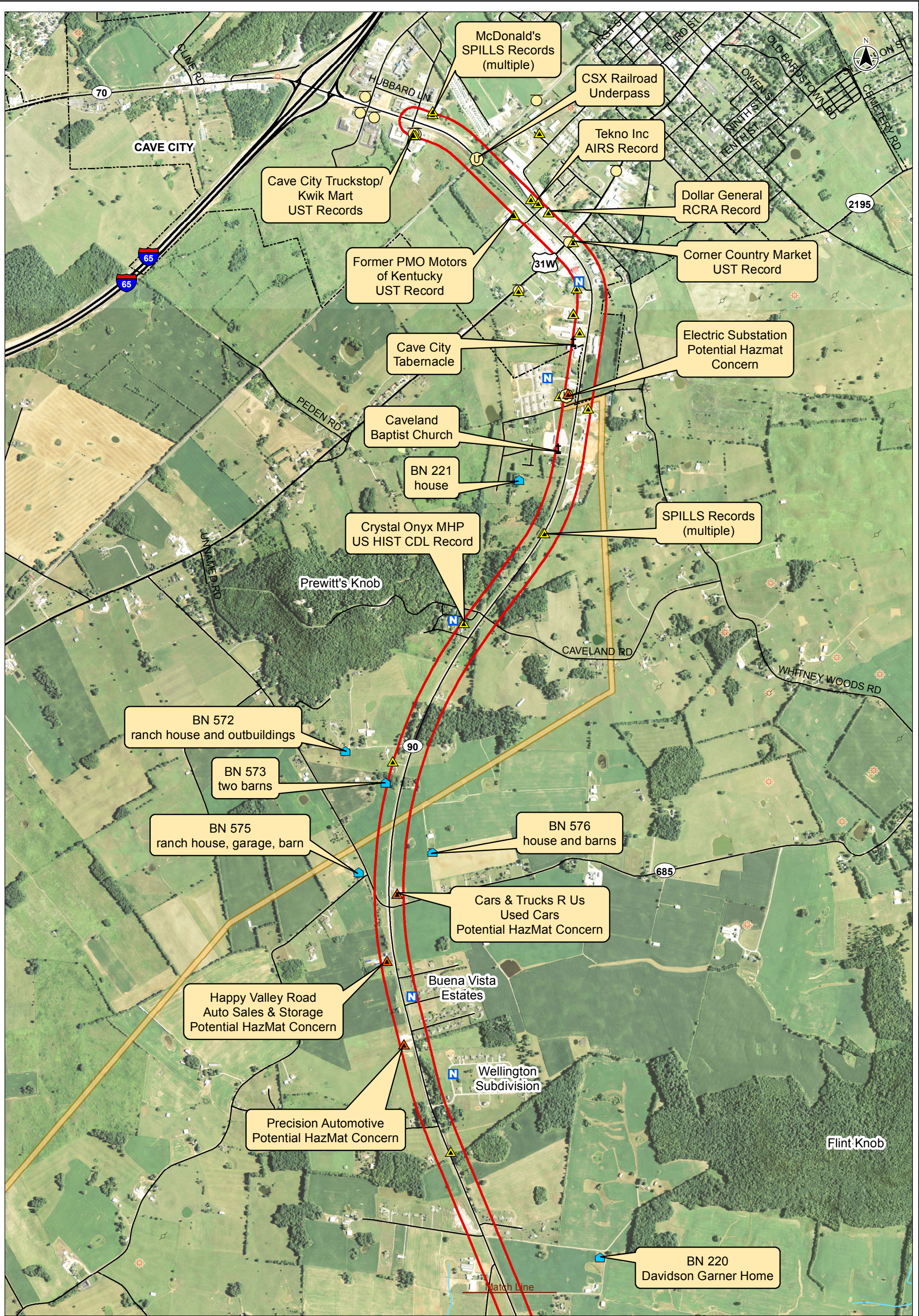
Client/Project  
KYIC District 3  
Environmental Overview  
KY 90 Scoping Study, KYIC Item # 3-8819.00

Figure No.  
**3.2**

Title  
**Environmental Footprint  
Natural Environment - South Section**

V:\178554021\KY\_90\_Scoping\_Study\mappings\KY90\_E03\_natural\_environment.mxd - Revised: 2016-02-24 By: blespoch





- Legend**
- Study Area
  - City Boundary
  - HazMat Record (EDR/USEPA)
  - UST Record (KDWM)
  - Archaeology Surveyed Area (KYOSA)
  - Previously Surveyed CH Site (KHC)
  - Streams (NHD)
  - + Cemetery
  - ⚓ House of Worship
  - N Noise Receptor
  - U Utility
  - ▲ Potential HazMat Site
  - ☀ Oil/Gas Well (KGS)
  - ⊙ Well Other

0 1,000 2,000 Feet  
1:19,000 (At original document size of 11x17)

**Notes**

1. Coordinate System: NAD 1983 StatePlane Kentucky FIPS 1600 Feet
2. Base Features: see Sources and References.
3. Base Imagery: USGS-NAIP, 2014.



Project Location  
KY 90  
Barren County, Kentucky  
178554021  
Prepared by Bl on 2016-01-15

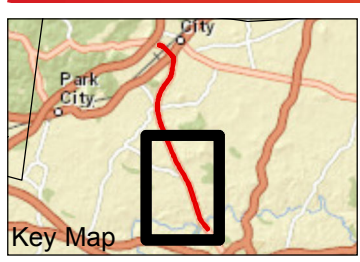
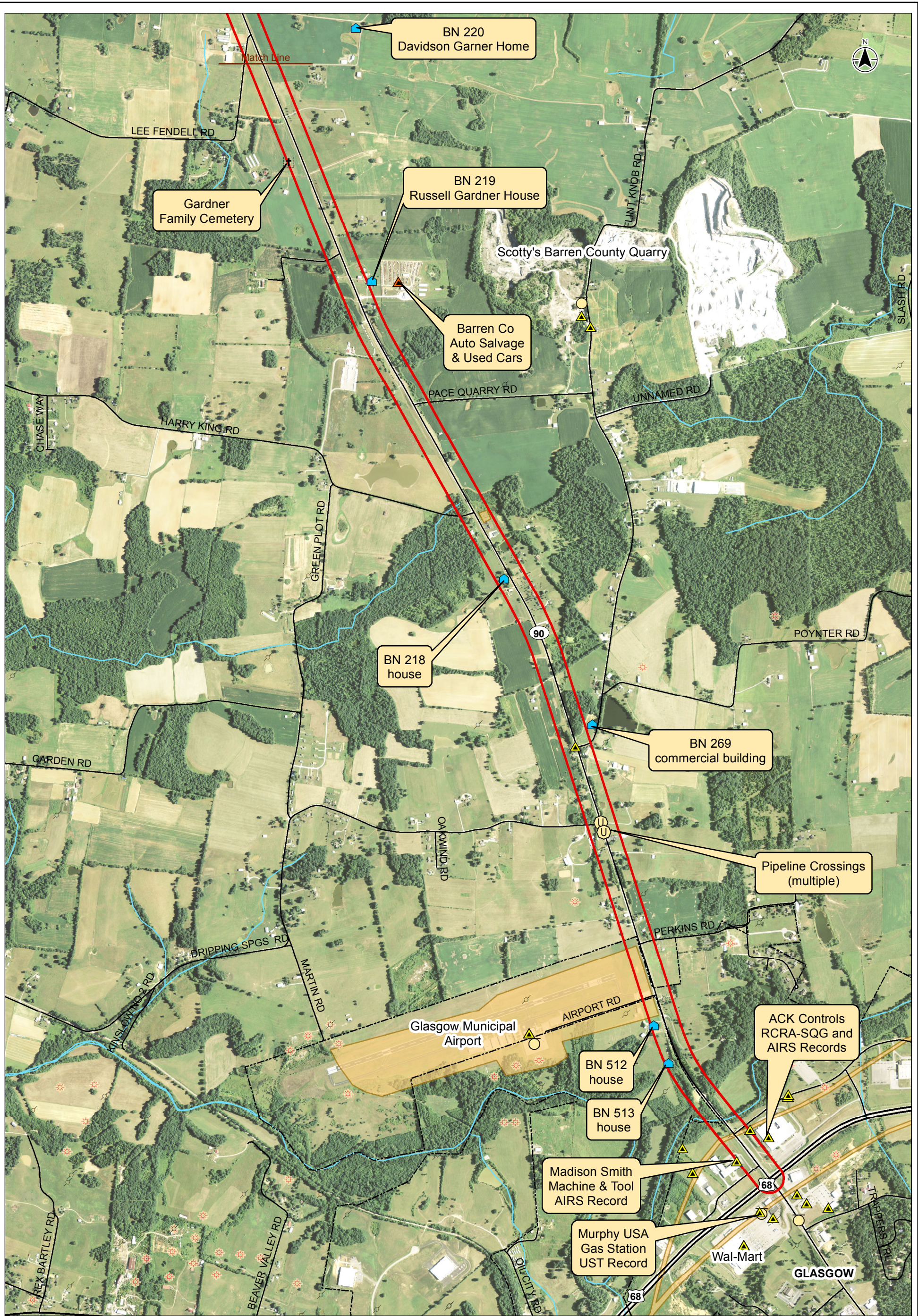
Client/Project  
KYTC District 3  
Environmental Overview  
KY 90 Scoping Study, KYTC Item # 3-8819.00

Figure No.  
**4.1**

Title  
**Environmental Footprint  
Human Environment - North Section**

V:\178554021\KY\_90\_Scoping\_Study\mapserver\178554021\_02\_24\_By:blanochl





- Legend**
- Study Area
  - City Boundary
  - HazMat Record (EDR/USEPA)
  - UST Record (KDWM)
  - Archaeology Surveyed Area (KYOSA)
  - Previously Surveyed CH Site (KHC)
  - Streams (NHD)
  - + Cemetery
  - ⚓ House of Worship
  - N Noise Receptor
  - U Utility
  - ▲ Potential Hazmat Site
  - \* Oil/Gas Well (KGS)
  - o Well Other

0 1,000 2,000 Feet  
1:19,000 (At original document size of 11x17)

**Notes**

1. Coordinate System: NAD 1983 StatePlane Kentucky FIPS 1600 Feet
2. Base Features: see Sources and References.
3. Base Imagery: USGS-NAIP, 2014.



Project Location  
KY 90  
Barren County, Kentucky  
Prepared by BL on 2016-01-15  
178554021

Client/Project  
KYTC District 3  
Environmental Overview  
KY 90 Scoping Study, KYTC Item # 3-8819.00

Figure No.  
**4.2**

Title  
**Environmental Footprint  
Human Environment - South Section**

VA1726A.ctb\active\178554021\KY\_90\_scoping\_study\mapseries\K90\_E04\_human\_environment.mxd - Revised: 2016-02-24 By: bhsocch